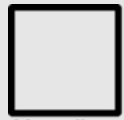


Hoja de símbolos del genograma

GENERO



Masculino



Femenino

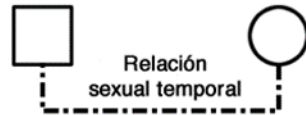
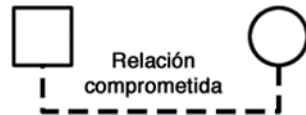


Transgénero
(Fem. a Masc.)



Transgénero
(Masc. a Fem.)

RELACIONES FAMILIARES



COMENTARIOS SOBRE LA RELACION



Divorciado(a)



Separado(a)

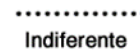
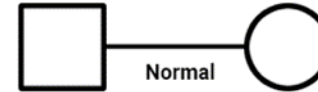


Viudo(a)

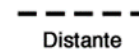


Cohabitación

RELACIONES EMOCIONALES



Indiferente



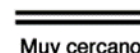
Distante



Separado



Amistad



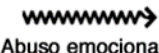
Muy cercano



En conflicto



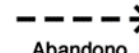
Abuso físico



Abuso emocional



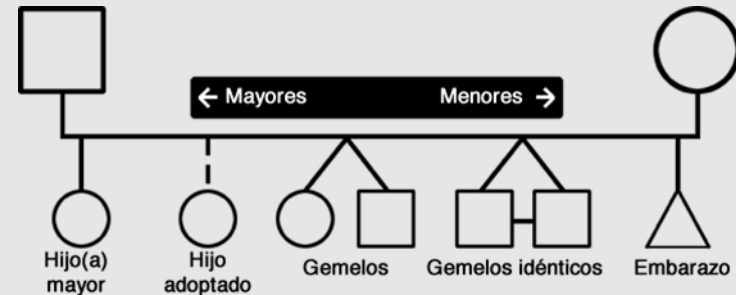
Abuso sexual



Abandono

Nota: Las líneas de abuso llevan una flecha para indicar a la víctima

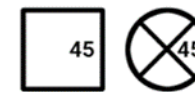
NIÑOS



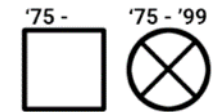
PERIODO DE VIDA



Difunto



Edad / edad al fallecer



Año de nacimiento y fallecimiento